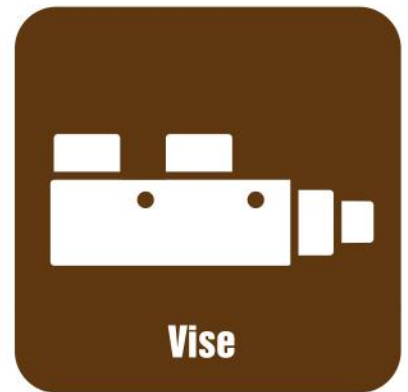


VICES



Power Vise

Power Vise Features

PCV (Standard Power Vise)	158.
PSV (Short-Type Power Vise)	159.
PLV (Long-Stroke Power Vise)	160.
PDV (Direct Drive Power Vise)	161.
DDV (Draw-Down Type Power Vise)	162.
MDV (Double Power Vise)	163.
	164.

Multi Clamping Vise

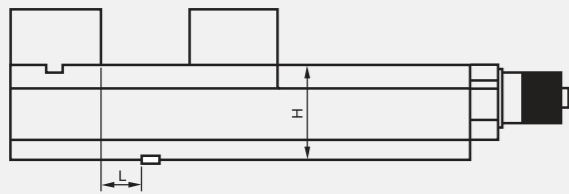
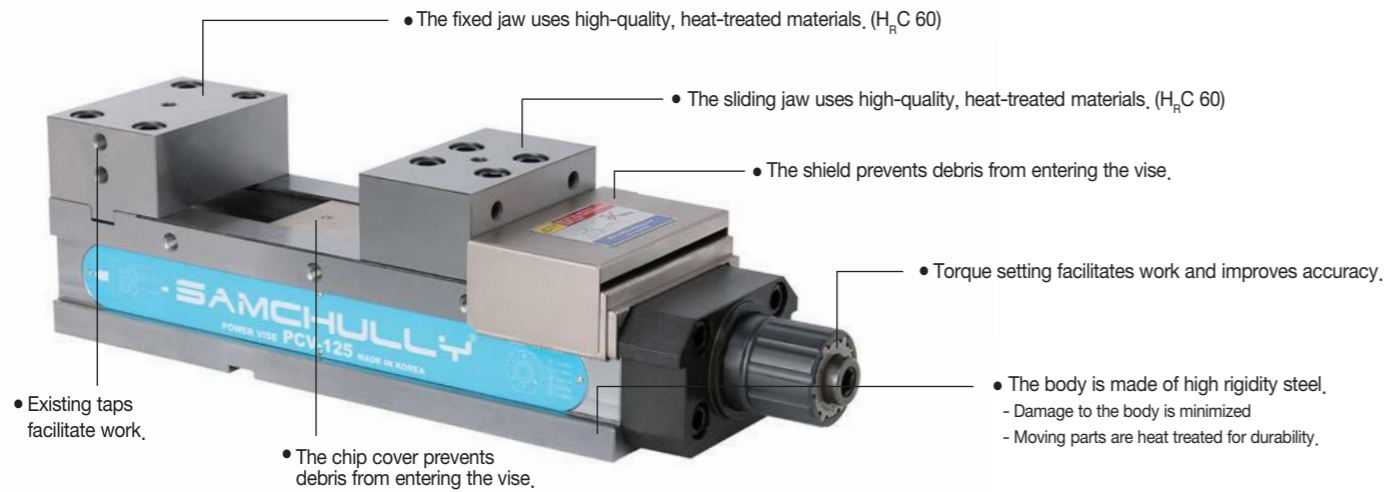
FV (Flexible Vise)	165.
---------------------------	------

Machine Vise

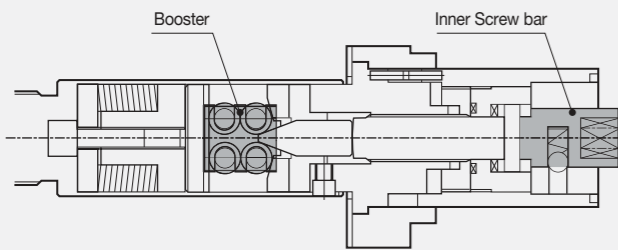
VS (Standard Machine Vise)	166.
MMV (Mechanical Machine Quick Vise)	167.

POWER VISE FEATURES

Power Vise Features



- Vise can be used arrange in a row.
 - Specified measurements are accurate within 0,01mm.
 - Accuracy for long work pieces is consistent.



- Large opening
 - Suitable for work on multiple-size workpieces.
- Maintains strong grip during machining.
 - Mechanical booster allow predetermined torque to be applied.
 - Torque setting is user-friendly, one-touch technology.
- Suitable for work pieces of varying sizes and specifications.
- Minimizes lifting / bowing of the workpiece.
 - Maintains high accuracy.
- Includes a mechanical booster for high-accuracy torque setting.

How To Set The Torque



1. Push in the adjustable knob.



2. Rotate the adjustable knob to the required torque setting.



3. Release the adjustable knob to lock in the setting.

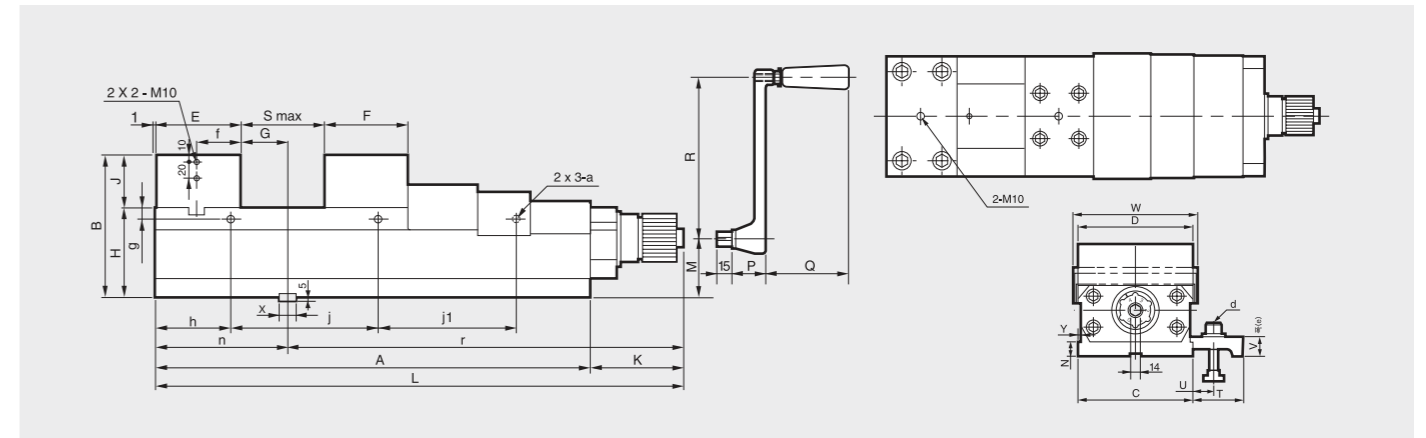
PCV

Standard Power Vise



POWER VISE

- Precision power vise with adjustable torque



Dimensions

	A	B	C	D	E	F	G	H	J	K	L	M	N	P	Q	R	S
PCV-100(4")	295	115	101	100	73	64	38.5	75	40	105.5	400.5	43	15	37	95	180	150
PCV-125(5")	400	135	126	125	84	76	60	85	50	105.5	505.5	50	21	37	95	180	230
PCV-160(6")	490	160	161	160	94	86	50	100	60	105.5	595.5	65	21	37	95	180	300
PCV-200(8")	533	180	202	200	102	98	74	110	70	105.5	638.5	75	21	37	95	180	320
PCV-250(10")	705	195	252	250	120	120	100	115	80	105.5	810.5	75	21	37	95	180	450

	T	U	V	W	X	Y	a	b	e	f	g	h	j	j1	j2	n	r
PCV-100(4")	60	14-26	22.5	107	14	6	M10	M12x45	35	36.5	12	95	105	-	-	112.5	288.0
PCV-125(5")	72	15-31	30	135	18	6	M10	M16x65	45	42	12	95	105	105	-	145	360.5
PCV-160(6")	72	15-31	30	170	18	7	M10	M16x65	45	47	12	105	140	140	-	145	450.5
PCV-200(8")	72	15-31	30	214	18	7	M10	M16x65	45	51	12	126	141	141	-	177	461.5
PCV-250(10")	72	15-31	30	267	22	7	M10	M20x65	45	60	12	140	140	140	140	221	589.5

Specifications

Type	Jaw Width	Jaw Height	Max. Opening	Total Height	Slider Height	Total Width	Total Length	Max. Gripping Force	Weight
	[mm]	[mm]	[mm]	[mm]	[mm]	[mm]	[mm]	[kN(kgf)]	[kgf]
PCV-100 (4")	100	40	150	115	75	107	400	25(2551)	25
PCV-125 (5")	125	50	230	135	85	135	505	35(3571)	43
PCV-160 (6")	160	60	300	160	100	170	595	60(6122)	65
PCV-200 (8")	200	70	320	180	110	214	638	60(6122)	100
PCV-250 (10")	250	80	450	195	115	264	810	80(8163)	150

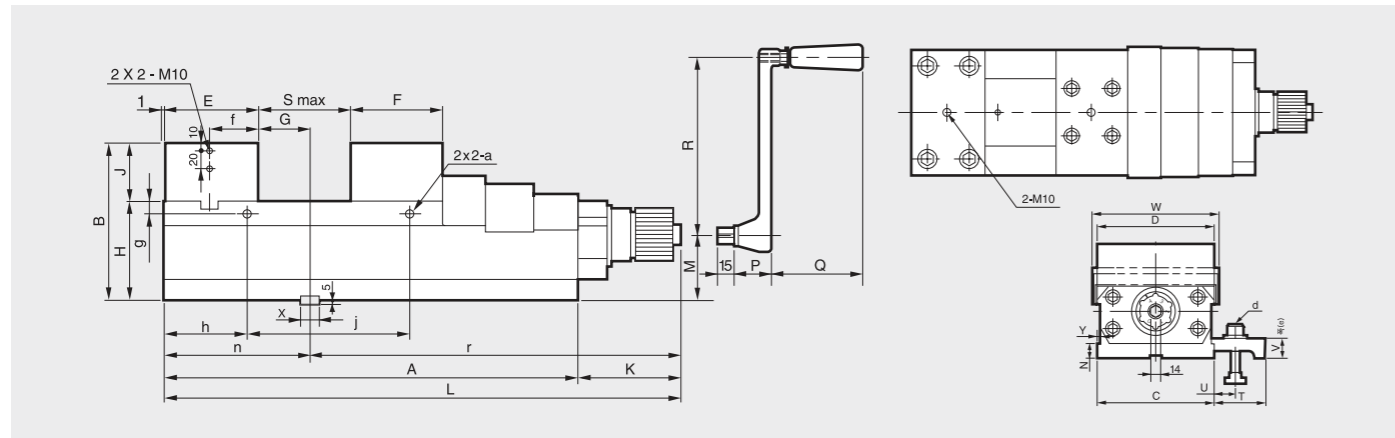
※ Specifications are subject to change without notice.

PSV

Short-Type Power Vise

- Short-body precision power vise with adjustable torque

POWER VISE



Dimensions

	A	B	C	D	E	F	G	H	J	K	L	M	N	P	Q	R	S
PSV-125(5")	295	135	126	125	84	76	60	85	50	105.5	400.5	50	21	37	95	180	125
PSV-160(6")	350	160	161	160	94	86	50	100	60	105.5	455.5	65	21	37	95	180	160
	T	U	V	W	X	Y	a	b	e	f	g	h	j	j1	n	r	
PSV-125(5")	72	15-31	30	135	18	6	M10	M16x65	45	42	12	95	105	105	145	150	
PSV-160(6")	72	15-31	30	170	18	7	M10	M16x65	45	47	12	105	140	140	145	450.5	

Specifications

Type	Jaw Width	Jaw Height	Max. Opening	Total Height	Slider Height	Total Width	Total Length	Max. Gripping Force	Weight
	[mm]	[mm]	[mm]	[mm]	[mm]	[mm]	[mm]	[kN(kgf)]	[kgf]
PSV-125(5")	125	50	125	135	85	135	400.5	35(3571)	41
PSV-160(6")	160	60	160	160	100	170	455.5	60(6122)	62

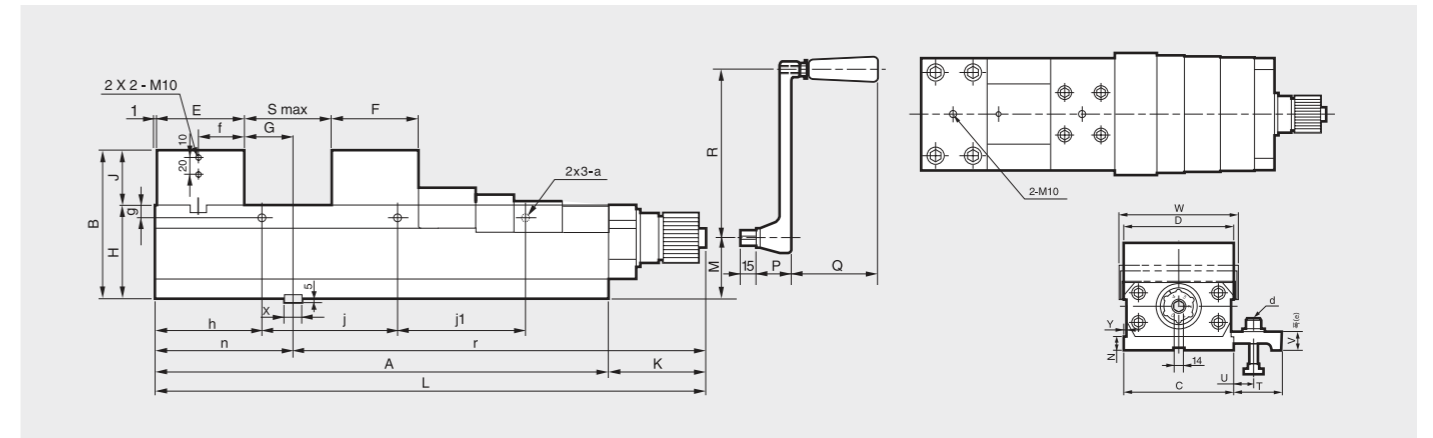
※ Specifications are subject to change without notice.

PLV

Long Stroke Power Vise

- Long-body precision power vise with adjustable torque

POWER VISE



Dimensions

	A	B	C	D	E	F	G	H	J	K	L	M	N	P	Q	R	Smax.
PLV-125(5")	595	135	126	125	84	76	60	85	50	105.5	700.5	50	21	37	95	180	420
PLV-160(6")	542	160	161	160	94	86	82	100	60	105.5	647.5	65	21	37	95	180	354
PLV-200(8")	618	180	202	200	102	98	74	110	70	105.5	723.5	75	21	37	95	180	405
	T	U	V	W	X	Y	a	b	e	f	g	h	j	j1	n	r	
PLV-125(5")	72	15-31	30	135	18	6	M10	M16x65	45	42	12	95	202.5	202.5	280	360.5	
PLV-160(6")	72	15-31	30	170	18	7	M10	M16x65	45	47	12	117	150	150	177	470.5	
PLV-200(8")	72	15-31	30	214	18	7	M10	M16x65	45	51	12	126	183	183	177	546.5	

Specifications

Type	Jaw Width	Jaw Height	Max. Opening	Total Height	Slider Height	Total Width	Total Length	Max. Gripping Force	Weight
	[mm]	[mm]	[mm]	[mm]	[mm]	[mm]	[mm]	[kN(kgf)]	[kgf]
PLV-125(5")	125	50	420	135	85	135	700.5	35(3571)	47
PLV-160(6")	160	60	354	160	100	170	647.5	60(6122)	70
PLV-200(8")	200	70	405	180	110	214	723.5	60(6122)	110

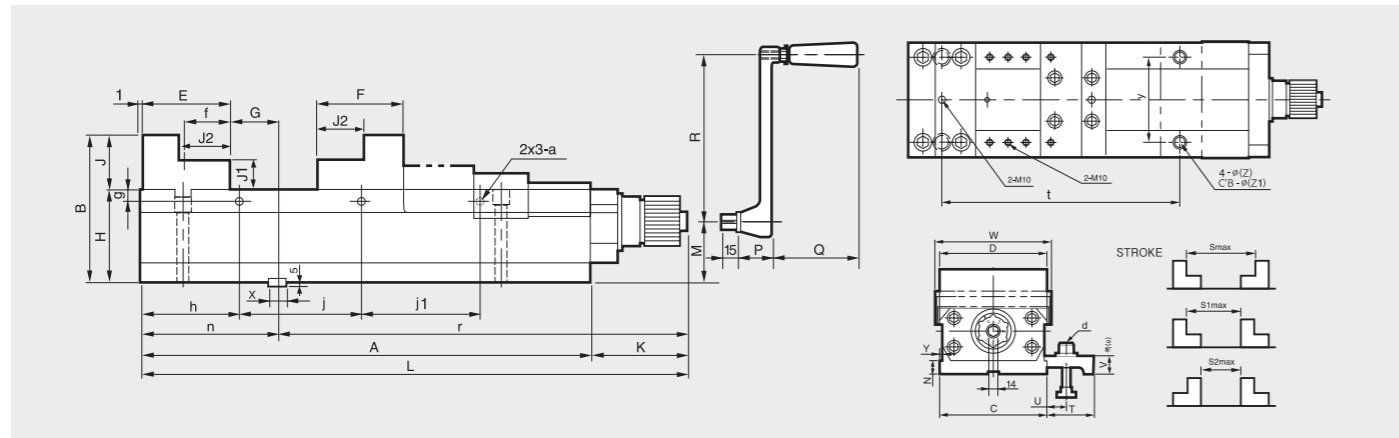
※ Specifications are subject to change without notice.

PDV

Direct Drive Power Vise

- Step-jaw precision power vise with adjustable torque

POWER VISE



Dimensions

	A	B	C	D	E	F	G	H	J	J1	J2	K	L	M	N	P	Q	R	S	S1	S2
PDV-100(4")	295	115	101	100	73	64	38.5	75	40	20	35	105.5	400.5	43	15	37	95	180	220	185	150
PDV-125(5")	400	135	126	125	84	76	60	85	50	25	45	105.5	505.5	50	21	37	95	180	320	275	230
PDV-160(6")	490	160	161	160	94	86	50	100	60	30	50	105.5	595.5	65	21	37	95	180	400	350	300
PDV-200(8")	533	180	202	200	102	98	74	110	70	35	50	105.5	638.5	75	21	37	95	180	420	370	320

	T	U	V	W	X	Y	a	b	e	f	g	h	j	j1	n	r	t	y	z	z1
PDV-100(5")	60	14-26	22.5	107	14	6	M10	M12x45	35	36.5	12	95	105	-	112.5	288	212	76	11	17
PDV-125(5")	72	15-31	30	135	18	6	M10	M16x65	45	42	12	95	105	105	145	360.5	321	92	11	17
PDV-160(6")	72	15-31	30	170	18	7	M10	M16x65	45	47	12	105	140	140	145	450.5	255	122	17	25
PDV-200(8")	72	15-31	30	214	18	7	M10	M16x65	45	51	12	126	141	141	177	461.5	375	150	17	25

Specifications

Type	Jaw Width	Jaw Height	Max. Opening	Total Height	Slider Height	Total Width	Total Length	Max. Gripping Force	Weight
	[mm]	[mm]	[mm]	[mm]	[mm]	[mm]	[mm]	[kN(kgf)]	[kgf]
PDV-100(4")	100	40	220	115	75	107	400.5	25(2551)	25
PDV-125(5")	125	50	320	135	85	135	505.5	35(3571)	43
PDV-160(6")	160	60	400	160	100	170	595.5	60(6122)	65
PDV-200(8")	200	70	420	180	110	214	638.5	60(6122)	100

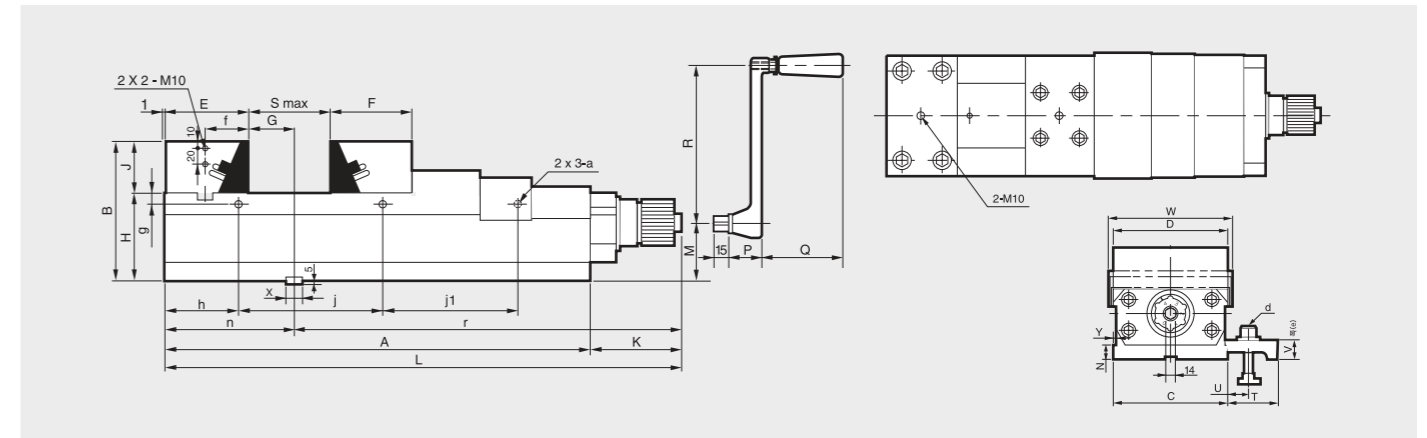
※ Specifications are subject to change without notice.

DDV

Draw-Down Type Power Vise

- Draw-down precision power vise with adjustable torque

POWER VISE



Dimensions

	A	B	C	D	E	F	G	H	J	J1	J2	K	L	M	N	P	Q
DDV-160(6")	490	160	161	160	120	112	24	100	60	105.5	595.5	65	21	37	95	180	248

	T	U	V	W	X	Y	a	b	e	f	g	h	j	j1	n	r
DDV-160(6")	72	15-31	30	170	18	7	M10	M16x65	45	47	12	105	140	140	145	450.5

Specifications

Type	Jaw Width	Jaw Height	Max. Opening	Total Height	Slider Height	Total Width	Total Length	Max. Gripping Force	Weight
	[mm]	[mm]	[mm]	[mm]	[mm]	[mm]	[mm]	[kN(kgf)]	[kgf]
DDV-160(6")	160	60	248	160	100	170	595	60(6122)	70

※ Specifications are subject to change without notice.

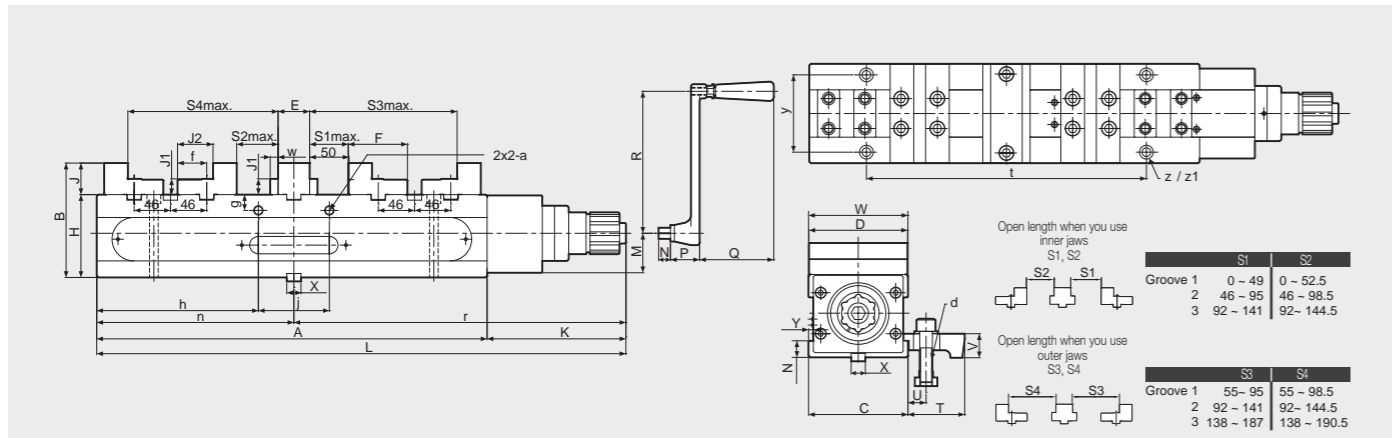
MDV

Double Power Vise

- Consists of Two movable Jaws and One fixed Center Jaw for Double clamping
- Equipped with step Jaw & Middle Jaw suitable for various workpieces
- Seal structure makes preventing the inner body from inflowing dust
- Realize High Clamping Force by Mechanical gravity Device



POWER VISE



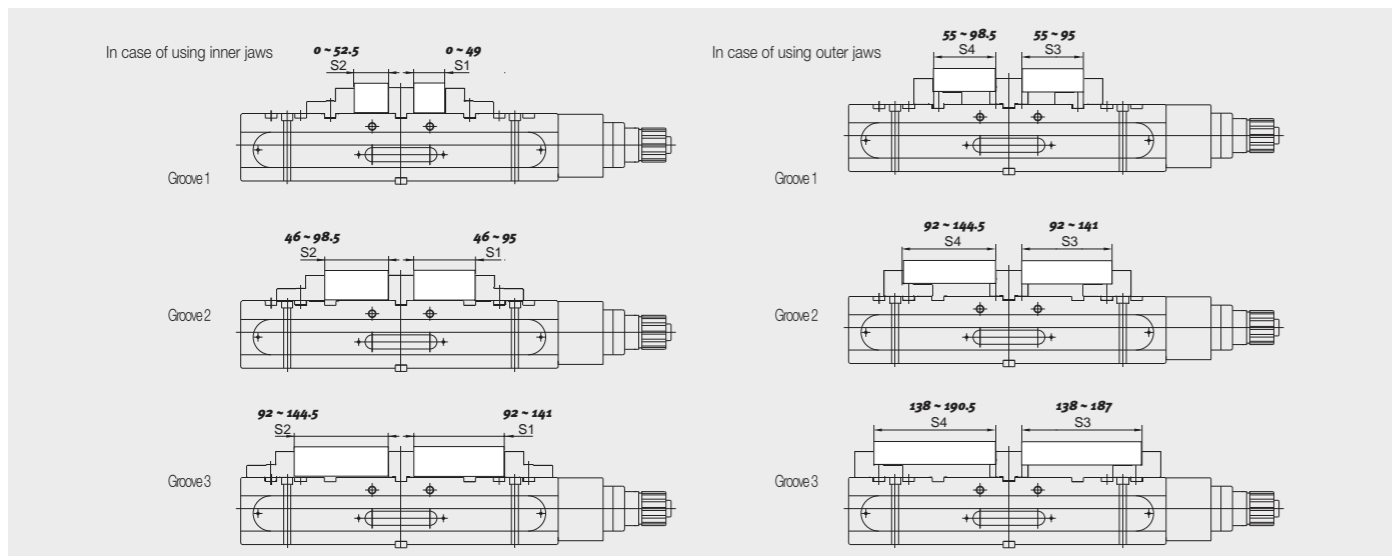
Dimensions

	A	B	C	D	E	F	H	J	J1	J2	K	L	M	N	P	Q	R
MDV-125	495	145	126	125	40	75	105	40	20	45	176	671	50	15	37	94	180

	T	U	V	W	X	Y	a	d	e	f	g	h	j	n	r	t	y	z	z1	w
MDV-125	72	15-31	30.5	126	18	6	M10	M16x65L	42	37	20	205	90	250	421	355	98	11	17.5	10

Specifications

Type	Jaw Width [mm]	Jaw Height [mm]	Max. Opening				Total Height [mm]	Slider Height [mm]	Total Width [mm]	Total Length [mm]	Max. Gripping Force [kN(kgf)]	Weight [kgf]
			S1	S2	S3	S4						
MDV-125	125	40	141	144.5	187	190.5	145	105	126	671	40(4355)	52



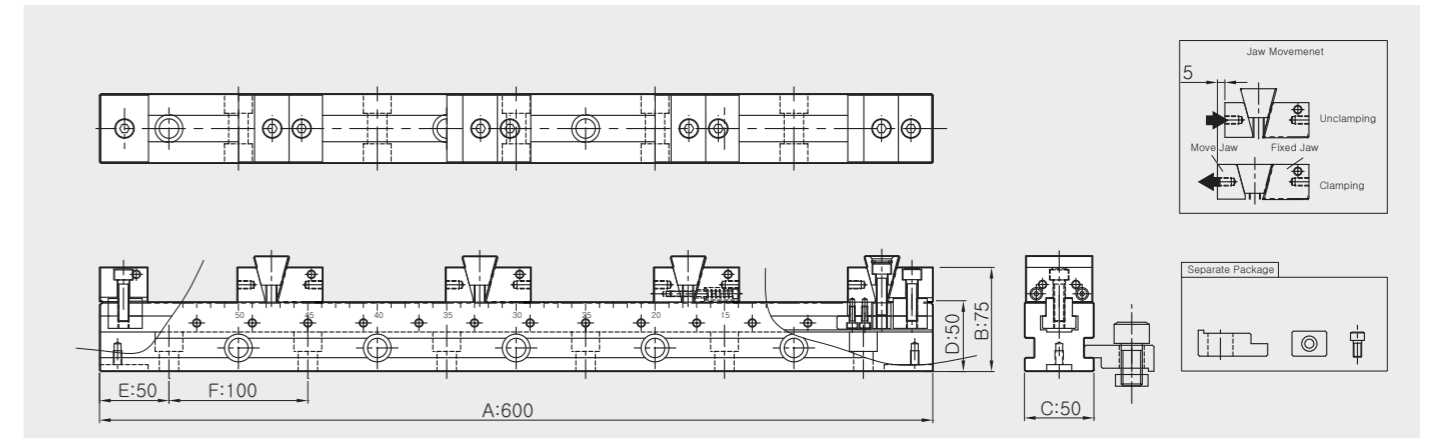
FV

Flexible Vise

- Flexible Multi Clamping Vise



MULTI CLAMPING VISE



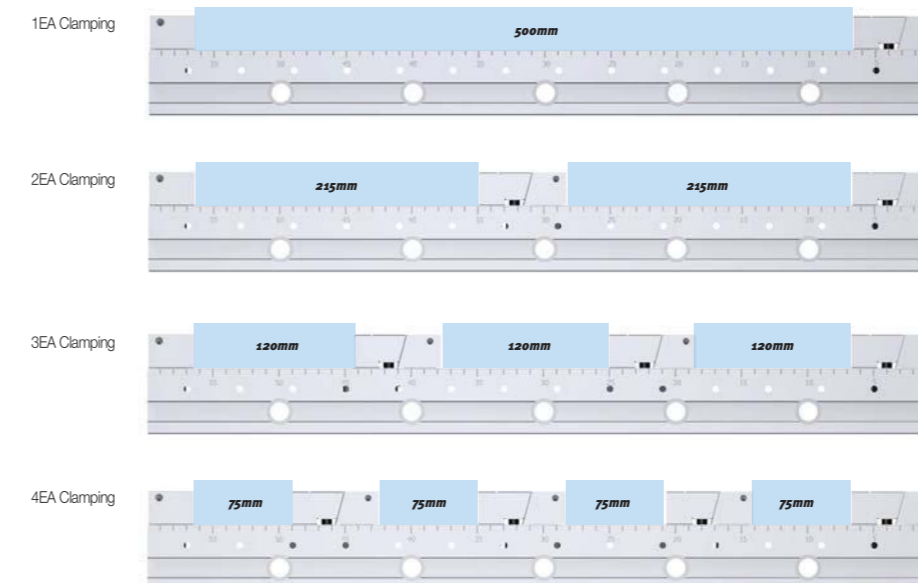
Dimensions

	A	B	C	D	E	F
FV-5060	600	75	50	50	50	100

Specifications

Type	Jaw Width [mm]	Jaw Height [mm]	Max. Opening				Total Height [mm]	Slider Height [mm]	Total Width [mm]	Total Length [mm]	Max. Gripping Force [kN(kgf)]	Weight [kgf]
			1EA	2EA	3EA	4EA						
FV-5060	50	25	500	215	120	75	75	50	50	600	-	15

Max. Clamping Range



VS

Standard Machine Vise

- Standard machine vise

MACHINE VISE

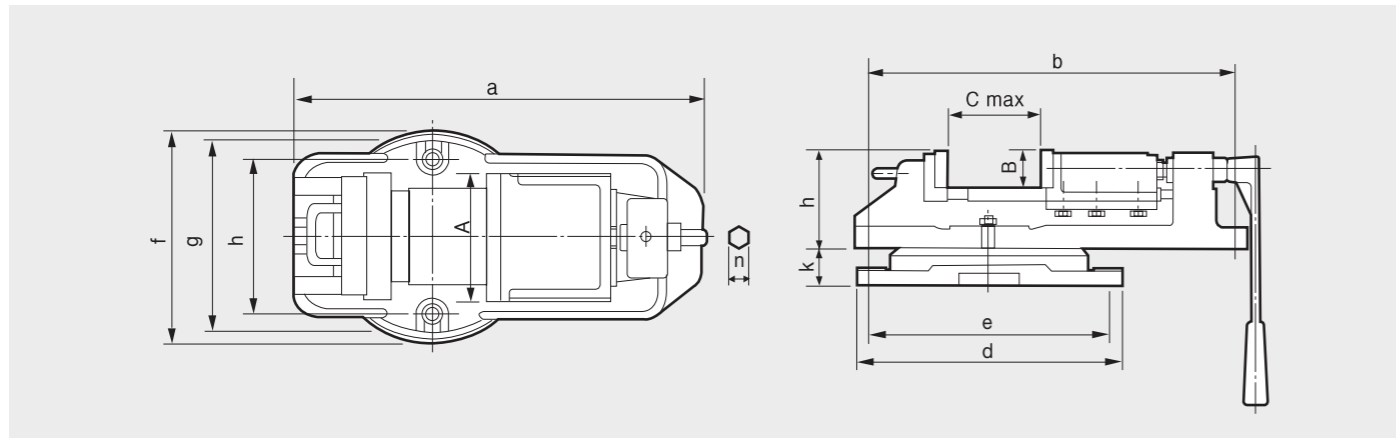


MMV

Mechanical Machine Quick Vise

- 3-step mechanical machine quick vise

MACHINE VISE



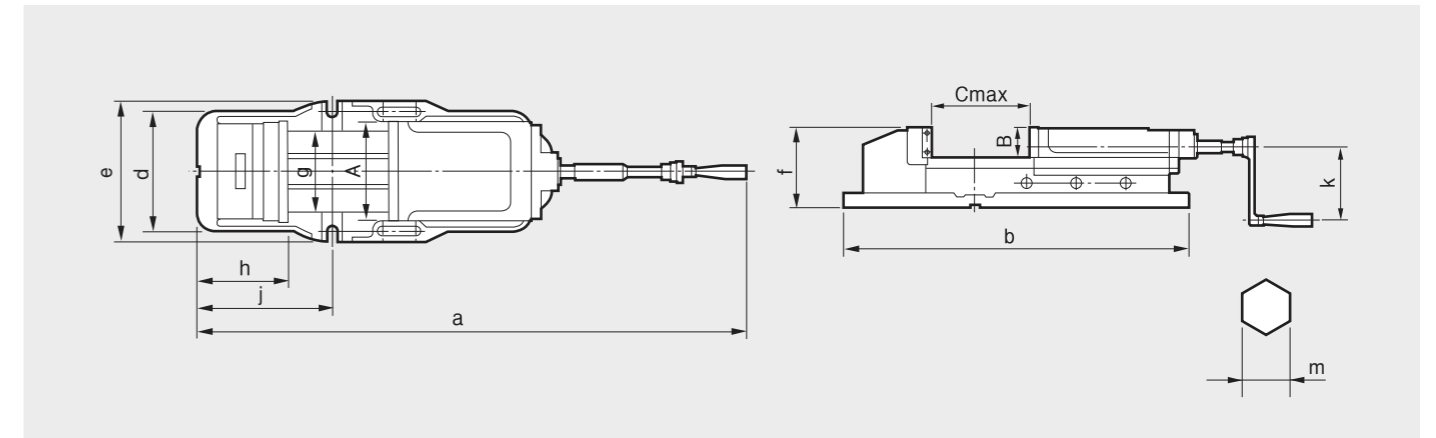
Dimensions

	A	B	C	a	b	d	e	f	g	h	j	k	m	n
VS-150(6")	150	45	110	470	440	320	288	245	220	180	115	45	283	18
VS-175(7")	175	50	132	547	518	350	318	280	245	198	120	50	340	21
VS-200(8")	200	55	160	618	573	400	358	316	280	228	130	55	340	21
VS-250(10")	250	75	199	760	716	450	406	370	332	278	168	60	380	22

Specifications

Type	Max. Opening [mm]	Weight [kgf]		Operating Swivel Base [mm]	Mounting Key Size [mm]
		Body	Table		
VS-150(6")	110	34	10.8	SB-150T	34x16x10
VS-175(7")	132	46.7	14.5	SB-175T	34x16x10
VS-200(8")	160	57.5	20.5	SB-200T	36x20x12
VS-250(10")	199	110	36.5	SB-250T	36x20x12

- ※ Specifications are subject to change without notice.
- ※ Standard accessories include handle (1ea), socket (1ea), T-blocks (2ea), T-bolts (2sets).
- ※ Swivel-base is optional.



Dimensions

	A	B	C	a	b	d	e	f	g	h	j	k	m
MMV-150Q(6")	150	51	300	800	620	200	240	133	116	125	210	130	19
MMV-200Q(8")	200	62	300	900	700	240	280	162	160	165	266	130	19

Specifications

Type	Max. Opening [mm]	Max. Grip Torque [kg]	Weight [kgf]		Operating Swivel Base [mm]	Mounting Key Size [mm]
			Body	Table		
MMV-150Q(6")	300	4,400	56.0	16.0	VS-175T	34x16x10
MMV-200Q(8")	300	6,500	94.0	23.0	VS-200T	36x20x12

- ※ Specifications are subject to change without notice.

APV

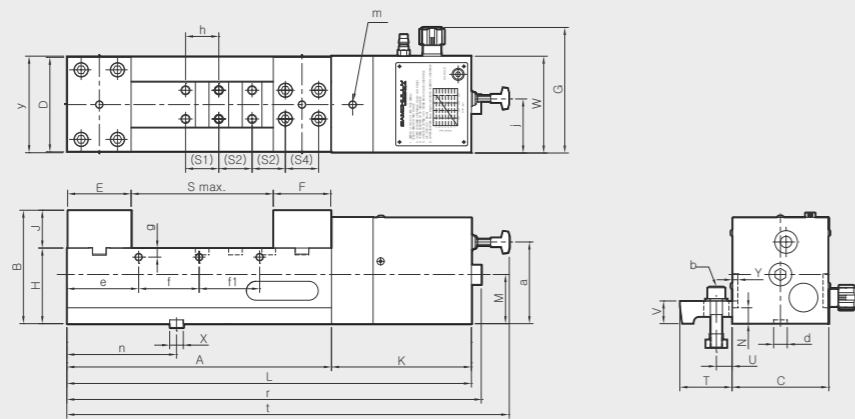
Air Vise



■ Standard Air vise

AIR VISE

notes



Dimensions

	A	B	C	D	E	F	G	H	J	K	L	M	N	Smax	T	U
APV-125	350	150	128	125	84	76	166	100	50	185	535	65	21	188	69	15-30
APV-160	350	160	161	160	94	86	199	100	60	185	535	65	21	165	72	23
	V	W	X	Y	a	b	d	e	f	g	h	j	n	r	t	
APV-125	30	128	18	7	108	M16X65L	18	95	80	12	44	71.5	145	548	585	
APV-160	30.5	163.8	18	7	97	M16x16L	18	105	140	12	50	100	145	548	584	

Specifications

Type	Jaw Width	Jaw Height	Max. Opening	Total Height	Slider Height	Total Width	Total Length	Max. Gripping Force	Weight
	[mm]	[mm]	[mm]	[mm]	[mm]	[mm]	[mm]	[kN(kgf)]	[kgf]
APV-125	125	50	188	150	100	166	585	35(3500)	55
APV-160	160	60	165	160	100	199	584	60(6000)	63

※ Specifications are subject to change without notice.

※ Standard accessories include Ratchet Handle (1ea), T-blocks (2ea), T-bolts (2sets).

